

HUNTINGTOWER
Co-Educational Day and Boarding School



Performing Arts Centre

www.huntingtower.vic.edu.au



Technical Information & General Specifications

April 2020

Theatre Manager

Email: pac@huntingtower.vic.edu.au

Phone: (03) 9807 8888

HUNTINGTOWER
77 WAIMARIE DRIVE
VICTORIA
AUSTRALIA 3149

Tel: 03 9807 8888

Fax: 03 9888 1089

admin@huntingtower.vic.edu.au

The Huntingtower Performing Arts Centre was officially opened in August of 2018 after two years of construction. The PAC is located within the school grounds of Huntingtower in Mount Waverley, Victoria, and is easily accessed via the schools entrance and a driveway to the PAC itself. There is sufficient parking in the school grounds.

STAGE & DIMENSIONS

Brief Stage Description

Huntingtower has an unranked stage with a proscenium arch, an apron, stage wings and a stage crossover corridor. The apron has a curvature of 0.56m from the sides to DS centre.

Suspended Stage Floor:

Top Layer: 9mm Weathertex Masonite screwed through surface.

Layer 2: 12mm CD grade structural plywood.

Layer 3: 30mm Show Works Sprung Floor comprised 18mm thick panel on 100mm x 100mm 12mm pads.

No flown scenery capabilities.

There is to be no nailing or screwing into the floor surface unless authorised by the Theatre Manager.

Stage distributed load limit	=	750kg/m² (7.5Kpa)
Stage point load limit	=	500kg on a 200 x 200 mm square
Stage rake	=	NO

Stage Dimensions

Proscenium

Width: 14.92m

Height: 8.1m

Setting Line: N/A

Distance From: (SL = Setting Line, CL = Centre Line)

SL to DS edge of apron –	2.9m
SL to rear wall –	9.93m
SL to Cyc curtain –	8.1m
SL to US tab track traveller curtain -	7.6m
SL to CS tab track traveller curtain -	4.6m
CL to OP wall (or obstruction) -	6.95m
CL to PS wall (or obstruction) -	7.11m
Stage floor to underside of grid -	10.65m

Stage Depth

From DS C apron to Cyc curtain -	11m
From DS P apron to Cyc curtain -	10.44m

AUDITORIUM

2 levels

Seating capacity: 750

Stalls: 498 (4 spaces for persons
in wheelchairs)

Balcony: 252

Wheelchair allocated seating positions: 4

*ground level, row E *

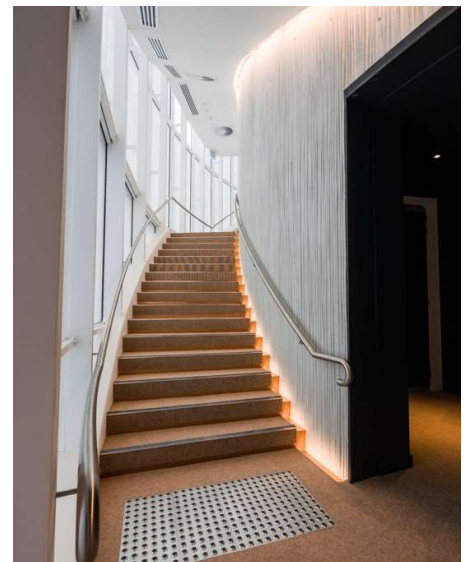
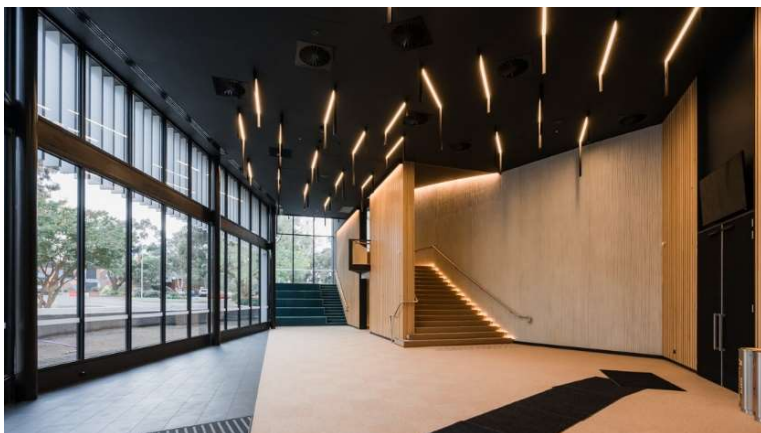
(more seats can be removed to accommodate
wheelchairs)



** Please note **

- Seats 4 to 8 in row U are currently removed
to make way for the audio console (seats not included in capacity count)

There is one entrance to the stalls on ground level (see below) and one half way up the curved stairs heading towards the balcony seating (see right). Balcony seating entrance is via this same staircase.



DISABLED ACCESS

Slight downhill sloping surface from street level to foyer. Level surface from foyer into accommodated seating in auditorium.

FRONT OF HOUSE

- Ticketing counter / cloak room
- Running water (hot/cold), sink
- 20amp power outlet for coffee machine
- Public amenities on foyer and lower levels

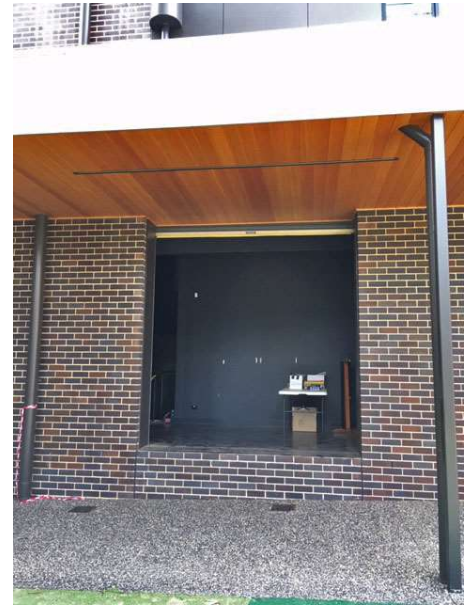
LOADING DOCK

Access

Truck and vehicle access to the loading dock is via a laneway directly off the main driveway entrance of the school.

Loading dock height from ground level-	Max. 600mm
Loading dock width -	2.87m
Loading dock height -	3.0m
Ground level to awning -	3.7m

*Huntingtower does not have a tailgate to level onto trucks, vans or utes.
A ramp must be supplied to get road cases from ground level up to the loading dock.



ACCESS EQUIPMENT

Elevated Work Platform

Not on site. Can be arranged by venue at extra charge.

Maximum working platform height 8.15m. Maximum EWP weight is 2.5 tonne.
Recommended model for size and weight: Genie 2632

EWP restrictions – Operators must be licensed, or deemed competent by the Supervising Technician. A spotter must be present whilst using the EWP.

Ladders

- 1 x 1.8m Aluminium double sided A-frame ladder
- 1 x 1m Aluminium single sided step ladder

DRAPERY

House Curtain: Red Velvet 2 x 9.5m X 9m

* Please note: House curtain is actioned via a pulley system on prompt side of stage. It is not motorised.

Borders: x 5 – Black wool

Legs: x 10 (5 pairs) – Black wool (3m x 9m)

Tabs: x 2 pairs – Black wool (9.5m x 9m)

Cyclorama: White Sharktooth Scrim (Pleated)

*All stage drapes and curtains are manufactured to Australian Standards 1530 parts 2 & 3

STAGING UNITS

Choir Risers

8 x 4-tier SICO Harmony Choral Risers

Approximately 16 students per section standing shoulder to shoulder.

Approximately 20 students per section standing with shoulders turned in.

Dimensions: 1.98m W x 1.84m D x 0.83m H (top tier)

18 x Timber risers (8 with hand rails)

1.2m W x 0.6m D x 0.2m H

1 x Black Lectern (with two XLR inputs. Shure MX418's currently in use)

140 x Presentation Chairs

60 x Music Stands



LIGHTING

A network of 260 x 10amp 230v patch points distributed to various lighting bars, catwalks and wall mounted outlets at ground level, terminating in the patch bay, which is located on the OP mezzanine level. 40 x DMX patch outlets to suit intelligent lighting fixtures also situated throughout the theatre.

Positions

3 x Catwalk LX bars (Catwalk 2 & 3 situated above audience. Catwalk 1 is above the stage apron and is referred to as the Proscenium bar - all fixed). Each bar has 26 patch points and 4 x DMX points (2 at PS and 2 at OPS). Each fixed bar has a rating of 50kg per linear metre. Catwalk 2 & 3 have 2 x Data/Ethernet ports at each end.

1 x Balcony rail with 16 patch points and 2 DMX points at either end. Accessible only via a ladder.

4 x ITE LX Ultra motorised lighting bars (above stage), individually controlled via a hand pendant controller on PS. Bars have a Working Load Limit of 500kg and a Pont Load of 50kg. 24 outlets on each bar, along with a 5pin DMX outlet and an Ethernet patch point on OP side and centre of bar. Bars are 16.02 metres in length and cannot be swung. Bar 4 is used for the 18 x ShowPro LED Cyc lights.

6 x Side ladders. 3 on prompt and 3 on opposite prompt galleries. Each ladder has 4 x patch/GPO outlets, 1 x DMX and 1 x Cat6 Ethernet outlet. These ladders are on rails and can be moved.

Please note – There are no follow spot positions in the catwalks or auditorium space.

Flying Facilities

The theatre does not have a flying system, apart from the designated LX bars.

However, there is one 1 x scenery bar mid stage which is controlled via an Ethernet cabled remote. S.W.L.L of 150kg

10 x scenery battens (fixed). Only accessible with an EWP

LIGHTING Cont'd

Control

Currently running Lightfactory software with two universes through PC based laptop from control room.

1 x Enttec program wing
1 x Enttec submaster wing
DMX 512 signal output.

Power & Data

4 x LSC GVW12 GEN VI wall mounted Redback dimmer racks
(provisions for 4 more 12 channel dimmer racks, 32amp 3 Phase outlets)
2 x LSC MDRX 10 way DMX Splitters
4 x Chauvet Data Stream 4-way DMX Splitters (5 & 3 pin)

*Patch bay is located on the mezzanine level OP side

Fixtures

12 x Showpro LEDPAR181 Quad 18 LED
6 x 18 x 3w PARLED
12 x Selecon RAMA 16RAFR175PL HP Fresnels 1000w
12 x Selecon SPX 15/35 Profile with GKV 800w lamp
18 x ShowPro LEDCYCRGBWA LED Cyc
4 x Harmony 1k Profiles
4 x Acclaim 650w Profile

*please contact venue for current standard LX plot

*any additional fixtures required for a show will incur an extra charge

Other LX patch locations

DS Apron – 2 x Stage Boxes: P & OP – 1 x DMX outlet, 2 x GPO's (green power), 2 x Ethernet outlets,
2 x data ports
DS Prompt – 2 x DIM/GPO outlets, 1 x DMX input, 2 x DMX outlets
DS Opp. Prompt - 2 x DIM/GPO outlets, 1 x DMX outlet
US Prompt – 6 x DIM/GPO outlets, 1 x DMX outlet
US Opp. Prompt - 6 x DIM/GPO outlets, 1 x DMX outlet
SMD – 2 x DMX Inputs

*Huntingtower has a limited number of extension leads and no 3-phase cables.

House Lights

Stand Alone Control – Available from a wall control unit situated next to the SMD, or a control unit in control room.

DMX Control – via lighting control software, Lightfactory.

AUDIO

Control Position – Designated control room position (sound proof) OR Auditorium seats (Row U, seats 4 – 9)
current position

Control & Amplification

Primary Mixer

Allen & Heath QU-32 digital console: (*remote access via iPad)

32 x Mic/Line Input Channels

3 x Stereo Inputs

24 x Mix Outputs

2 x Stereo Matrix Outs

4 x Mute Groups

4 x FX Engines

Trim, polarity, HPF, gate, insert, 4-band PEQ, compressor and delay on all inputs

Multi-Track recording of up to 32 channels now available with Ableton Live 10 on iMac connected to the Qu-32.

I/O Hardware:

Local – 36in/28out

OP Mezzanine level – Cat6 dSnake to Stage Box: Allen & Heath AR2412 (24in/12Out) &
Allen & Heath AR84 Expander (8in/4out)

Secondary Mixer

Presonus Studio Live 16.4.2 Digital Console

Control/Playback

Denon DVD Player DN-500BD (Blu-Ray), HP laptop (Model: XPS 13 9370; i7 Intel Core 8th Gen, 16gb RAM)

Amplifiers & Speakers

FOH System: 3 x d&b audiotechnik 30D Amplifiers (4 x 1600w into 4Ω)

1 x d&b audiotechnik 10D Amplifier (4 x 700w into 4Ω) (Audience Front Fills)

14 x d&b audiotechnik Ti10L Speakers (7 per side)

1 x d&b audiotechnik Yi7P Speaker (Centre)

1 x d&b audiotechnik Yi10P Speaker (Centre)

4 x d&b audiotechnik 27A Subwoofer (Centre)

8 x d&b audiotechnik 4S Speaker (stage front fill)

4 x d&b audiotechnik 5S Speaker (under balcony fill)

4 x d&b audiotechnik 8S Speaker (stalls side)

AUDIO Cont'd

Control Room Monitoring: 1 x d&b audiotechnik 30D Amplifiers (4 x 1600w into 4Ω)
2 x d&b audiotechnik 8S Speaker

Foldback: 2 x Alto Elvis 12A Speakers (active)
2 x Quest QS350 Speakers (passive)
1 x InterM V2-2000 Power Amplifier

Hearing Augmentation:

The theatre has a Rode NTG-2 shotgun mic mounted on catwalk 2. The signal is routed to the control room where it is plugged into an Australian Monitor AMIS26 distribution pre amp, which feeds the Ampetronic hearing loop amplifiers. There is an induction loop under the carpet in both stalls and balcony areas. The signal can be received by switching a hearing aid to “T” mode.

Microphones

2 x Shure MX418 Gooseneck Condenser Microphone (Lectern)
2 x Shure SM58 Dynamic Vocal Microphone
3 x Shure SM57 Dynamic Instrument Microphone
1 x Audix i5 Dynamic Cardioid Instrument Microphone
1 x Shure PGA98H Cardioid Condenser Instrument Microphone
1 x Sennheiser e602-II Cardioid Dynamic Instrument Microphone
2 x Rode NT5 Cardioid Condenser Mics (1 x matched pair)
6 x Rode M5 Cardioid Condenser Mics (3 x matched pairs)
2 x Behringer C-2 Studio Condenser Mics (1 x matched pair)
2 x SE Electronics sE1a Cardioid Condenser Mics (1 x matched pair)
2 x JTS NX9 Vocal/Instrument Condenser Microphone
1 x JTS NX8 Handheld Dynamic Microphone

Radio Mics

16 x MiPro ACT-312 UHF Receivers
8 x MiPro ACT-311 UHF Receivers
9 x MiPro ACT-30T (6B) Bodypack Transmitters
11 x MiPro ACT-30T (5NB) Bodypack Transmitters
5 x MiPro ACT-30H (5NB) Handheld Transmitters
3 x MiPro ACT-30H (6B) Handheld Transmitters

Audio Accessories

12 x Tall K & M Boom stand
5 x Behringer Powerplay P2 In-Ear Monitor Amplifiers
2 x Palmer 2ch Passive DI
2 x Palmer 1ch Passive DI
2 x Palmer 1ch Active DI
1 x ARTcessories 1ch (Xdirect) Active DI
1 x 12/4 30m Multicore

AUDIO Cont'd**Audio Cable**

Various lengths of XLR, jack, mini jack, RCA and adapters.

Audio Patching

All terminate at patch bay on mezzanine level, OP

Apron stage boxes:

DS Apron (prompt) – 6 x XLR sends, 1 x XLR return, 1 x speakon patch
 DS Apron (centre prompt) – 6 x XLR sends, 1 x XLR return, 1 x speakon patch
 DS Apron (centre OP) - 6 x XLR sends, 1 x XLR return, 1 x speakon patch
 DS Apron (OP) - 6 x XLR sends, 1 x XLR return, 1 x speakon patch

Mid stage boxes:

Prompt – 2 x XLR sends, 1 x XLR return
 Centre – 2 x XLR sends, 1 x XLR return
 OP – 2 x XLR sends, 1 x XLR return

US wall plates:

Prompt – 4 x XLR sends, 1 x XLR return
 OP – 4 x XLR sends, 1 x XLR return

Stage Managers Desk (Opp. Prompt) – 4 x XLR sends, 1 x XLR return

DS wall plates:

Prompt – 6 x XLR sends, 1 x XLR return
 OP – 6 x XLR sends, 1 x XLR return

Talkback System

1 x Jands Ezicom E-400 Intercom 4ch master at audio console
 4 x Ezicom E-100 beltpacks (cabled)
 4 x Clear-Com headsets
 1 x Jands E101 beltpack (cabled)
 1 x Jands EH51 headset

Talkback patching located at Stage Managers Desk, LX control, audio control, both prompt side change rooms, green room, US Prompt, US OP, Catwalks 1 & 2, ticket counter/cloak room (foyer), outside broadcast.

VISION

All sources of vision run through a Kramer VS-1616D Matrix Switcher, which in turn is controlled via a Crestron CP3 controller with two 7" touch panels (one located in the control room and the other is hardwired into the lectern). Multiple HDMI inputs from control room are switchable via a Roland V-1HD Video Switcher (4 x HDMI inputs)

Sources:

Denon DVD player, HP Laptop, HDMI inputs from lectern, control room, HDMI from current audio desk location (auditorium), HDMI from SMD, AirMedia and CCTV

Projector:

Epson EB-L1505UNL – 12,000 lumens, 4K enhancement, laser light source (installed on balcony fascia)

Screens:

16:10 Front Projection: Screen Technics - 5.385m x 8.62m (motorised, controlled via Creston touch panel) (1.86m from SL)

16:9 Front Projection: Stumpfl, dead hung on motorised scenery bar – 16' x 9' (4.09m from SL)

CCTV:

PTZ Cameras (Panasonic) in foyer, on balcony rail (stage view), backstage (SMD) and also on lighting bar catwalk 1 (audience view). Controlled by a Panasonic AW-RP120 remote, which is located in the control room.

Monitors:

- 1 x Stage foldback monitor – Samsung 31"
- 1 x Green room monitor – NEC 31"
- 1 x Stage Manager monitor – NEC 31" (Stage view)
- 1 x Foyer monitor (above auditorium entrance) – Panasonic 72"

LAUNDRY/WARDROBE

No laundry washing or drying facilities within the venue.
1 x Iron/board

GREEN ROOM (OPPOSITE PROMPT)

No tea/coffee making facilities
No fridge/freezer
No Microwave
Amenities - Yes

DRESSING ROOM

There are two dressing rooms on OP side of stage.
Each dressing room is equipped with mirrors,
make-up lights, sink with hot/cold water,
independent heating/cooling controls,
costume rack and provisions for preview monitor
and talkback.

1 at 3.6m x 5.3m (19.08m²)

1 at 4.5m x 5.3m (23.85m²)

**INTERNET ACCESS**

Yes – Guest login WiFi available in PAC

PRODUCTION OFFICE

No

SENIOR TECHNICIAN'S AUTHORITY

The Theatre Senior Technician has the right to stop any activity that he deems unsafe or threatens the well-being of any individual or the venue itself and can take action, delegate and issue instructions to address such a situation. He also has the right and authority to amend or deem unfit any set, props or technology brought in with the production if it is found unsafe.

SAFETY ISSUES

- All electrical equipment brought into the venue must be tested and tagged.
- All lighting fixtures brought into the venue must have an accompanying safety wire.
- The venues OH&S policies and procedures must be followed at all times.
- All clients must submit OH&S documentation prior to the event.
- Live flame and pyrotechnics are only permitted in the Huntingtower Performing Arts Centre with the approval of the Theatre Manager

SMOKING

There is no smoking permitted anywhere on the school grounds.

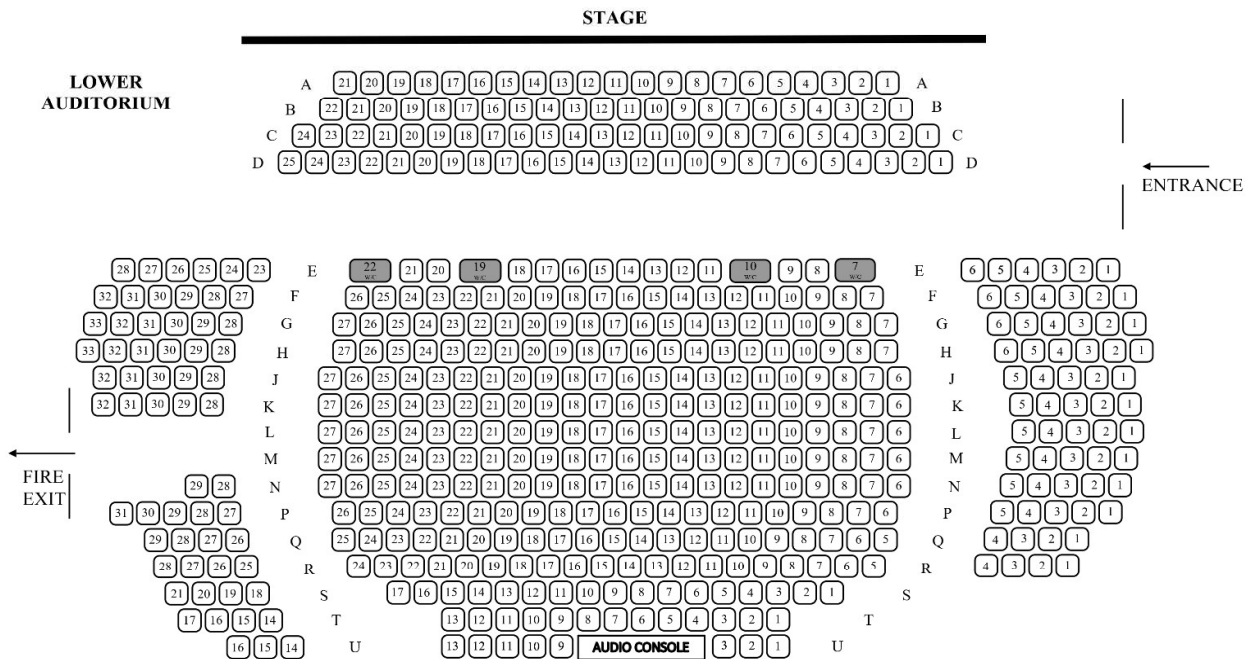
FOOD AND DRINK

Alcohol is strictly prohibited in the venue and on the school grounds. Alcohol cannot be sold at any event.

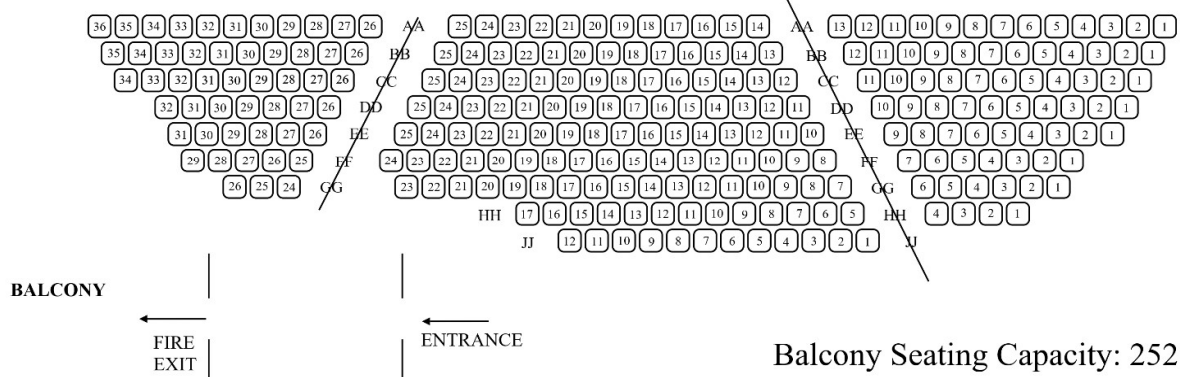
No food or drink is to be consumed in the auditorium or on stage areas.

Food and drink is only allowed to be offered or sold during a Hiring Period with written consent from the PAC Manager and the appropriate permits have been obtained and submitted to Huntingtower.

Huntingtower Performing Arts Centre Seating Plan



Stalls Seating Capacity: 498
Wheelchair Provisions: 4
Total Lower Level Stalls: 502



Balcony Seating Capacity: 252
Stalls Seating Capacity: 498

Total Seating Capacity: 750

Please note that not all of the equipment listed in this Technical Specifications document are included in the hiring of this venue. Depending on the requirements of your event, additional charges will incur.

For further information regarding venue bookings or technical aspects, please contact our PAC Manager on the following sources:

Theatre Manager

pac@huntingtower.vic.edu.au

03 9807 8888



HUNTINGTOWER
77 WAIMARIE DRIVE
VICTORIA
AUSTRALIA 3149

Tel: 03 9807 8888

Fax: 03 9888 1089

admin@huntingtower.vic.edu.au